

Getting to Know Your 2011 Traverse



Review this Quick Reference Guide for an overview of some important features in your Chevrolet Traverse. More detailed information can be found in your Owner Manual. Some optional equipment described in this guide may not be included in your vehicle.

If you have additional questions about the features and controls in your vehicle, press the blue Onstar button to speak with a customer assistance representative who can provide more information.

Instrument Panel

Turn Signal Lever/
Windshield Wipers Lever

Cruise Control
Buttons

Instrument
Cluster

Audio Steering
Wheel Controls



Exterior Lamps
Control

Instrument Panel Illumination
Control/Dome Lamp Off Button

Tilt/Telescopic Steering
Wheel Lever

Symbols



StabiliTrak/
Traction Control



Oil Pressure



Check Engine or
Tighten Gas Cap



Charging System



Airbag Readiness



Cruise Control Set



BRAKE Brake System



Engine Coolant
Temperature



Antilock Brake
System



Security



Low Tire Pressure



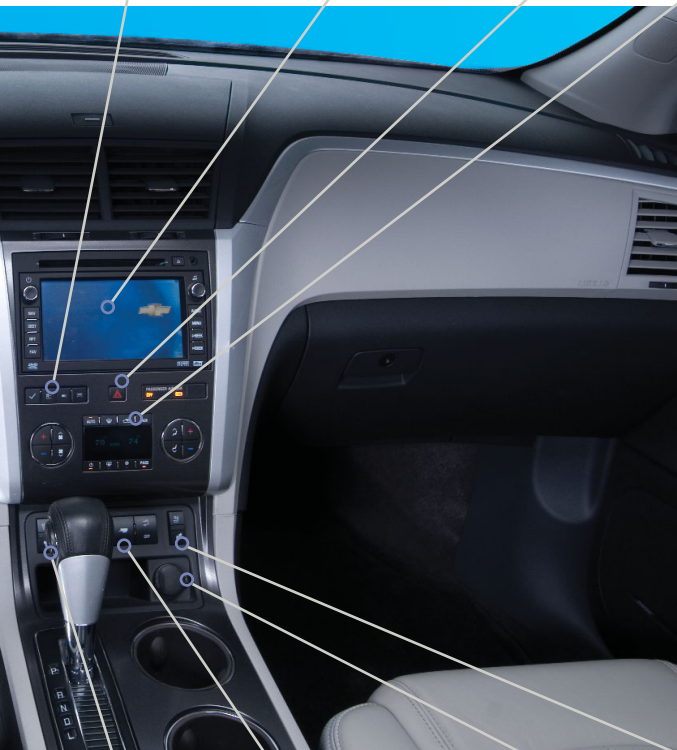
Safety Belt Reminder

Driver Information
Center Buttons ◆

Audio System/
Navigation System ◆

Hazard Warning
Flashers Button

Climate
Controls



Driver's
Heated/Cooled
Seat Buttons ◆

Rear Wiper Switch/
Traction Control Off Button/
Tow/Haul Mode Button ◆/
Power Liftgate Switch ◆

Accessory
Power Outlet

Passenger's
Heated/Cooled
Seat Buttons ◆

Note: Refer to your Owner Manual to learn about the information being relayed by the lights, gauges and indicators of the instrument cluster, as well as what to do to ensure safety and prevent damage.

◆ optional equipment

See *Instruments and Controls* in your Owner Manual.

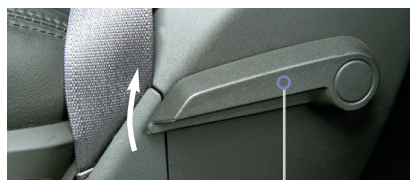
Driver's Seat

Manual Driver's Seat



A

B



D

C



Power Driver's Seat (optional)



A

B

C

Head Restraint

The head restraint is in a forward position to meet the Insurance Institute for Highway Safety (IIHS) performance criteria for rear impacts.

- To raise the head restraint, pull it up.
- To lower the head restraint, press the release button on the head restraint post and push it down.

A. Seat Fore/Aft Adjustment

Lift the handle under the front of the seat to manually slide the seat forward or rearward.

B. Seat Height Adjustment

Repeatedly ratchet the lever on the outboard side of the seat up to raise the seat or down to lower the seat.

C. Seatback Recline Adjustment

Lift the lever on the lower outboard side of the seatback (behind the safety belt) to manually recline or raise the seatback.

D. Lumbar Adjustment

Pull up/push down the lever on the inboard side of the seatback to adjust the amount of lumbar support.

A. Seat Adjustment

Move the horizontal control to move the seat forward or rearward and to raise, lower or tilt the seat.

B. Seatback Recline Adjustment

Move the vertical control to recline or raise the seatback.

C. Lumbar Adjustment

Press the switch to adjust the amount of lumbar support.

See *Seats and Restraints* in your Owner Manual.

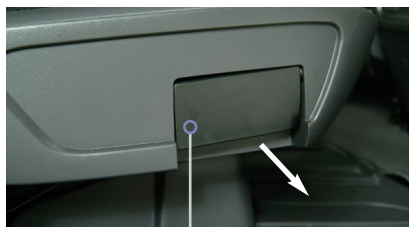
Enter or Exit the 3rd-Row Seats



A

1. Make sure nothing is on the 2nd-row seat or the floor in front of or behind the seat.
2. Fold up the armrest(s).
3. Rotate the release lever (A) on the upper-outboard side of the seatback forward.
4. Push the top of the seatback forward. The seat cushion will fold and the entire seat will slide forward.
5. After entering/exiting, push the top of the seatback rearward until the seatback and floor tracks lock.
6. Push down at the rear of the seat cushion to lock it in place.

Slide the Seat



B

1. Make sure nothing is on the floor in front of or behind the 2nd-row seat.
2. Pull outward on the handle (B) on the outboard side of the seat cushion and slide the seat forward or rearward.
3. Release the handle.

Fold/Recline the Seatback



C

1. Make sure the seat is all the way rearward (when folding the seat) and the armrest(s) are upright.
2. Pull forward on the strap (C) on the outboard side of the seatback.
3. Fold down or recline the seatback.

See *Seats and Restraints in your Owner Manual.*

Exterior/Interior Lighting

Automatic Headlamp System



Instrument Panel Lighting

Dome Lamp

 Off/On

AUTO Automatic Headlamp System

Activates the Daytime Running Lamps (DRLs) in the daytime and the headlamps and other exterior lamps at night or when necessary.

Parking Lamps

Manual operation of the parking lamps.

Headlamps

Manual operation of the headlamps.

Instrument Panel Brightness

Turn the small knob to increase or decrease the instrument panel lighting. Turn the knob fully to turn on the dome lamps when all doors are closed.

Dome Lamp Off

Press the button to turn off the dome lamps. **With the button depressed, the dome lamps will not turn on when a door is open.**

Press the button again to have the dome lamps turn on when a door is open.

See Lighting in your Owner Manual.

Rear Seat Climate Controls

Front Seat Control

Press the **REAR** button (A) on the front climate control panel to cycle through three rear control settings — Front, Rear, and Off.

Front: Provide control to the front seat occupants; the rear settings are the same as the driver's settings.

Rear: Provide control to the rear seat occupants; the rear settings are controlled by the rear controls.

Off: Turn off the rear climate controls system.





Dual automatic climate controls (optional) shown.

Rear Seat Control



Rear climate controls with rear seat audio (optional) shown.

Rear seat occupants can adjust the rear settings at any time by using the rear controls, regardless of the front control panel REAR setting.

- To turn on the rear system, press any rear control.
- To turn off the rear system, turn the left knob to the  Off position, or press the down  Fan Control repeatedly (rear climate controls with rear seat audio).

See *Climate Controls* in your Owner Manual.



Set Cruise Control

1. Press the **On/Off** button. The button indicator will illuminate when the system is on.
2. When traveling at the desired speed, press the **SET-** button to set the speed. The **Cruise Control** symbol will illuminate on the instrument cluster.

Adjust Cruise Control

RES+ Resume/Accelerate

Press to resume a set speed.

When the system is active, press to increase speed.

SET- Set/Coast

When the system is active, press to decrease speed.

Cancel

Press to cancel the cruise control but retain the set speed in memory.

The cruise control set speed is erased when cruise control or the vehicle ignition is turned off.

See Driving and Operating in your Owner Manual.

Audio Steering Wheel Controls *(optional)*



+ ▮ - Volume

Pull up the + or - button to increase or decrease the volume.

△ ▽ Next/Previous

Press the up or down arrow to go to the next or previous favorite radio station, CD track or DVD chapter *(optional)*.

SRCE Source

Press to select an audio source.

Press and hold for one second to initiate voice recognition on the navigation system *(optional)*.

▷ ▮ Seek

Press to go to the next radio station on the same band, CD track or DVD chapter *(optional)*.

🔇 Mute/Push to Talk

Press to mute the vehicle speakers.

Press and hold for two seconds to interact with the OnStar or Bluetooth system.

📞 End

Press to end or reject an OnStar or Bluetooth call.

Bluetooth® System *(optional)*

A Bluetooth-enabled cell phone must be paired with the in-vehicle Bluetooth system before it can be used in the vehicle. Not all phones will support all functions.

Visit www.gm.com/bluetooth for more information.

See Instruments and Controls in your Owner Manual.

Rear Wiper/Washer



Rear Wiper

Press the top of the switch to turn the rear wiper on or off.

Washer Fluid

Press the bottom of the switch to spray washer fluid on the rear window.

See *Instruments and Controls in your Owner Manual*.

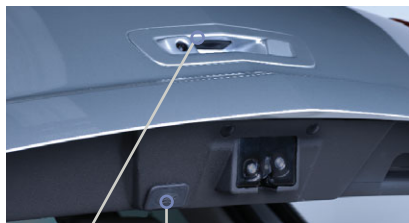
Power Liftgate (optional)



Power Liftgate Switch

- Press the **Power Liftgate OFF** switch to turn off the power liftgate. The liftgate can only be operated manually when the power liftgate switch is in the Off position.
- Press the top of the **Power Liftgate** switch to turn on the power liftgate.


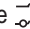
Note: If the power liftgate does not open or close, make sure the power liftgate switch is not in the Off position.



A

B

Open/Close the Power Liftgate

- Press and hold the  **Power Liftgate** button on the Remote Keyless Entry transmitter until the liftgate starts moving.
- Press the top of the  **Power Liftgate** switch on the center console.
- Press the touchpad (A) above the liftgate handle to open.
- Press the touchpad (B) next to the liftgate latch to close.

See *Keys, Doors and Windows in your Owner Manual*.

Wind Noise


If a rear window is open, there may be a buffeting wind noise inside the vehicle. Opening a front window slightly when a rear window is open will prevent this noise from occurring.

See Keys, Doors and Windows in your Owner Manual.

Towing

The Traverse base towing capacity is 2,000 lbs. Vehicles equipped with the Trailer Towing Package have a towing capacity of 5,200 lbs.

Use the Tow/Haul mode (*optional*) when pulling a heavy trailer to reduce the frequency of transmission shifts and improve the control of vehicle speed.

- To turn the Tow/Haul mode on or off, press the  **Tow/Haul** button on the center console.

See Vehicle Care in your Owner Manual.


Battery Location

The battery is located beneath the floor behind the front passenger seat.

Jump-start positive and negative posts are located under the hood on the passenger's side of the vehicle.

See Vehicle Care in your Owner Manual.

Tire Pressure Monitor

The Tire Pressure Monitor alerts you when the tire pressure in any tire becomes too low by illuminating the  **Low Tire Pressure** warning light on the instrument cluster. The warning light will remain on until the tire pressure is corrected by adding the proper amount of air to the tire(s). Refer to the Tire & Loading Information label in the driver's door opening for the recommended tire pressures. Once the tires are properly filled with air, drive the vehicle and the warning light will turn off.

You may notice during cooler outdoor temperatures that the low tire pressure warning light will turn on when the vehicle is first started and then turn off as you drive and tire pressure expands. This may be an early indicator that your tire pressures are getting low and the tires need to be inflated to the correct pressure.

Note: *The Tire Pressure Monitor can alert you about low tire pressure, but it doesn't replace normal monthly tire maintenance. It is the driver's responsibility to maintain correct tire pressures.*

See Vehicle Care in your Owner Manual.

Roadside Assistance

1-800-CHEV-USA
(1-800-243-8872)

TTY Users: 1-888-889-2438

As the owner of a new Chevrolet, your vehicle is automatically enrolled in the Chevrolet Roadside Assistance program for 5 years/100,000 miles at no expense to you. This value-added service is intended to provide you with peace of mind as you drive in the city or travel the open road.

Chevrolet's Roadside Assistance toll-free number is staffed by a team of technically trained advisors who are available 24 hours a day, 365 days a year, to provide minor repair information or make arrangements to tow your vehicle to the nearest Chevrolet dealer.

Roadside Assistance and OnStar

If you have a current OnStar subscription, press the OnStar button and the vehicle will send your current GPS location to an OnStar Advisor who will speak to you, assess your problem, contact Roadside Assistance and relay your exact location so you will get the help you need.

Chevrolet Owner Center

The Chevrolet Owner Center, a complimentary service for Chevrolet owners, is a one-stop resource designed to enhance your Chevrolet ownership experience. Exclusive member benefits include:

- Online service reminders
- Vehicle maintenance tips
- Online owner manual
- Special privileges

Sign up today at www.gmownercenter.com/chevrolet.

Always demand genuine GM Parts

Certain restrictions, precautions and safety procedures apply to your vehicle. Please read your Owner Manual for complete instructions. All information contained herein is based on the latest information available at the time of printing and is subject to change without notice. Copyright 2010 by General Motors. All rights reserved.



20977796 A